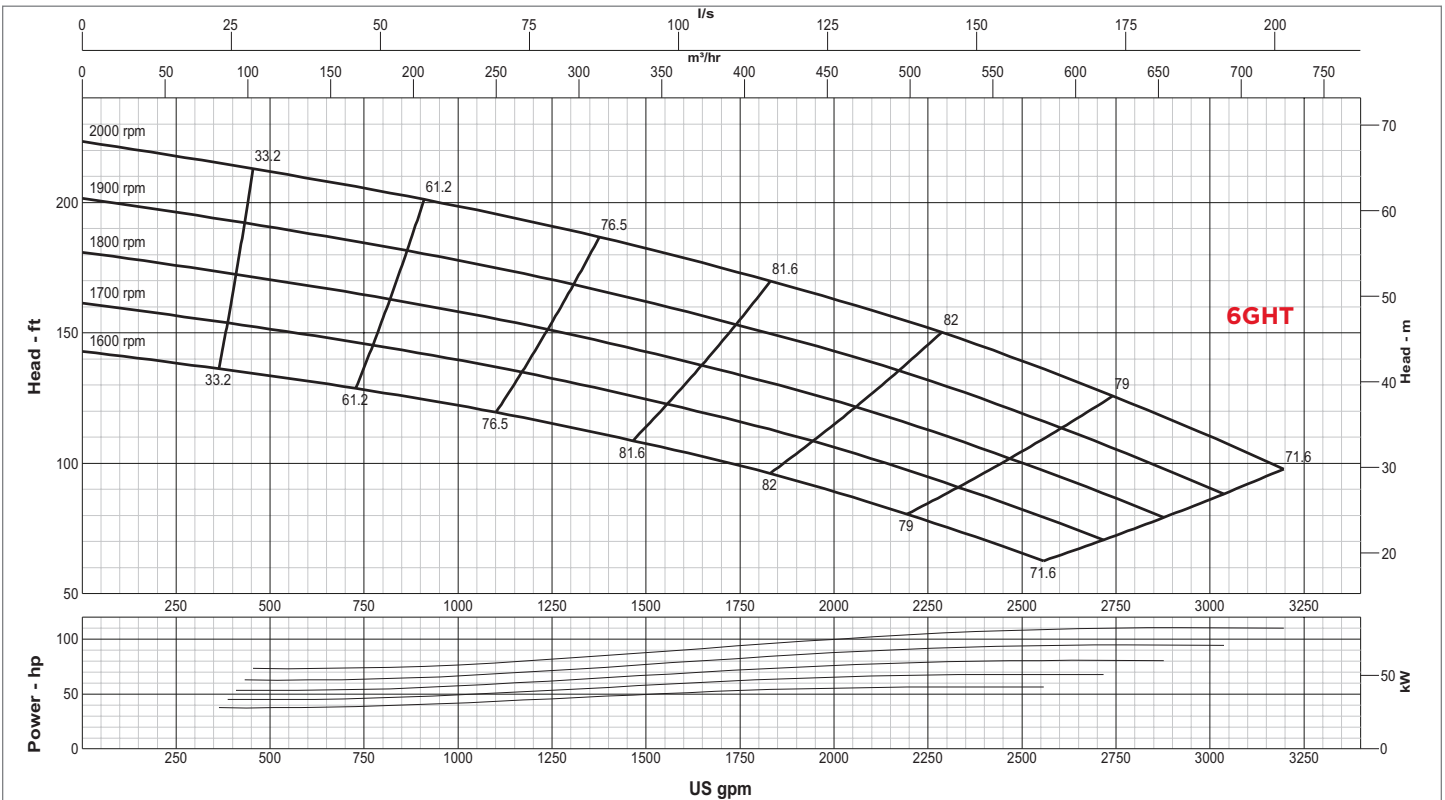


SPECIFICATIONS

| | |
|----------------------------|-----------------------------------|
| Connections | 6" (150 mm) ANSI Flanges |
| Max Pump Speed | 2,000 rpm |
| Max Flow | 3,200 gpm (727 m ³ /h) |
| Max Head | 223' (68 m) |
| Max Static Priming Lift | 28' (8.5 m) |
| Temperature Limit | 160° F (70° C) |
| Solids Handling Capability | 3" (76.2 mm) |
| Max Casing Pressure | 125 psig (862 kPa) |
| Fuel Cell | 109 gallons (413 liters) |
| Dry Weight | 4,800 lbs |

PUMP MATERIAL

| | |
|---------------------|------------------------------------|
| Casing | Cast Iron (CD4MCu is an option) |
| Impeller | Cast Iron (CD4MCu is an option) |
| Bearing Housing | Cast Iron |
| Bearing Lubrication | Grease |
| Shaft/Shaft Sleeve | Steel/Stainless Steel |
| Seal | Silicon Carbide on Silicon Carbide |
| Chassis/Fuel Cell | Steel |
| Non-Return Valve | Nitrile Fitted Cast Iron |



GLOBAL PUMP
 10162 East Coldwater Road, Davison, MI 48423
 Tel: 810.653.4828 Fax: 810.658.0632
1.866.360.PUMP www.globalpump.com